

The SilberPfeil® Foldable Pipe

This is how it's done:

Preparation

Fillready: Open the fresh pack and drain out the brine. Fill up with warm water (max. 35°C) until all pipes are covered with water. Soak for 30 minutes.

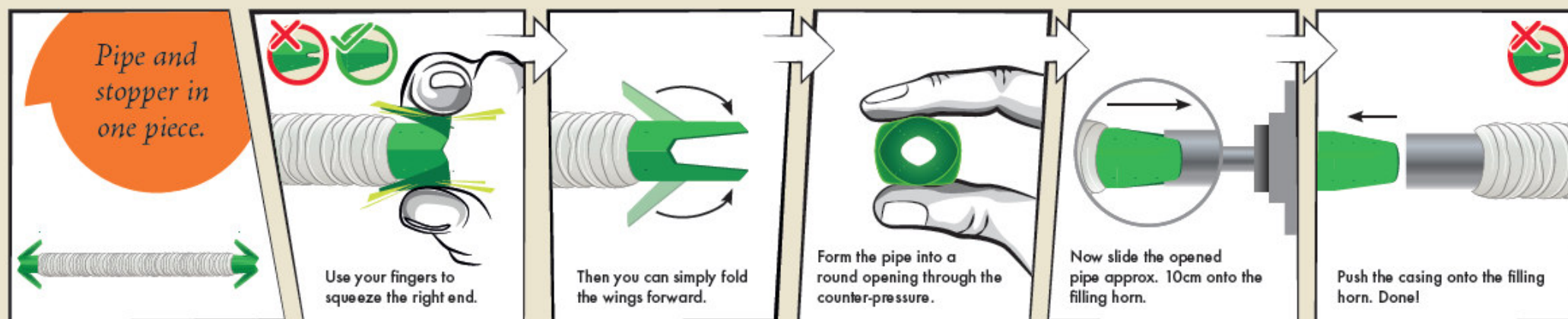
The casings are now ready to be filled. Please follow the below instruction.

Salted: Open the fresh pack and empty the pipes carefully into an E2-crate. Fill the crate up with cold water until all pipes are covered.

After 30 minutes change the water and soak the pipes overnight in enough cold water (ca. 18 litres per crate). The next day drain out the water, fill up with warm water (max. 35°C) and soak for another 30 minutes.

The casings are now ready to be filled – please follow the below instruction.

Application



Attention: SilberPfeil® Foldable Pipes with overlapping have to be filled with soft casing breaks only. If there is no soft break available, please open your break as much as possible to enable the overlapped part passing through the break smoothly. For proper adjustment of the filling machine, the casing break and the holding device, please contact the CDS application technicians.

You can contact the CDS-service team at:
+49 (0) 7951-391-0